

April 24, 1928.

1,667,163

R. F. LAMAR

MERRY-GO-ROUND

Filed Feb. 18, 1927

2 Sheets-Sheet 1

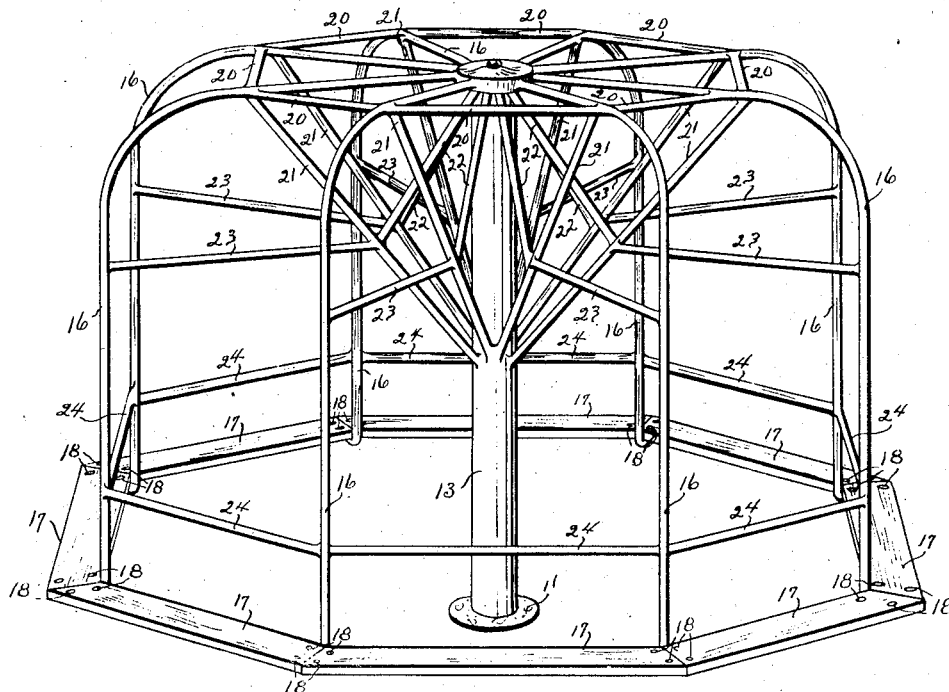


Fig. 1.

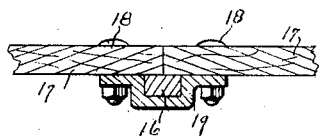


Fig. 4.

Inventor

RALPH F. LAMAR

By *Earl M. Sinclair*

334

Attorney

April 24, 1928.

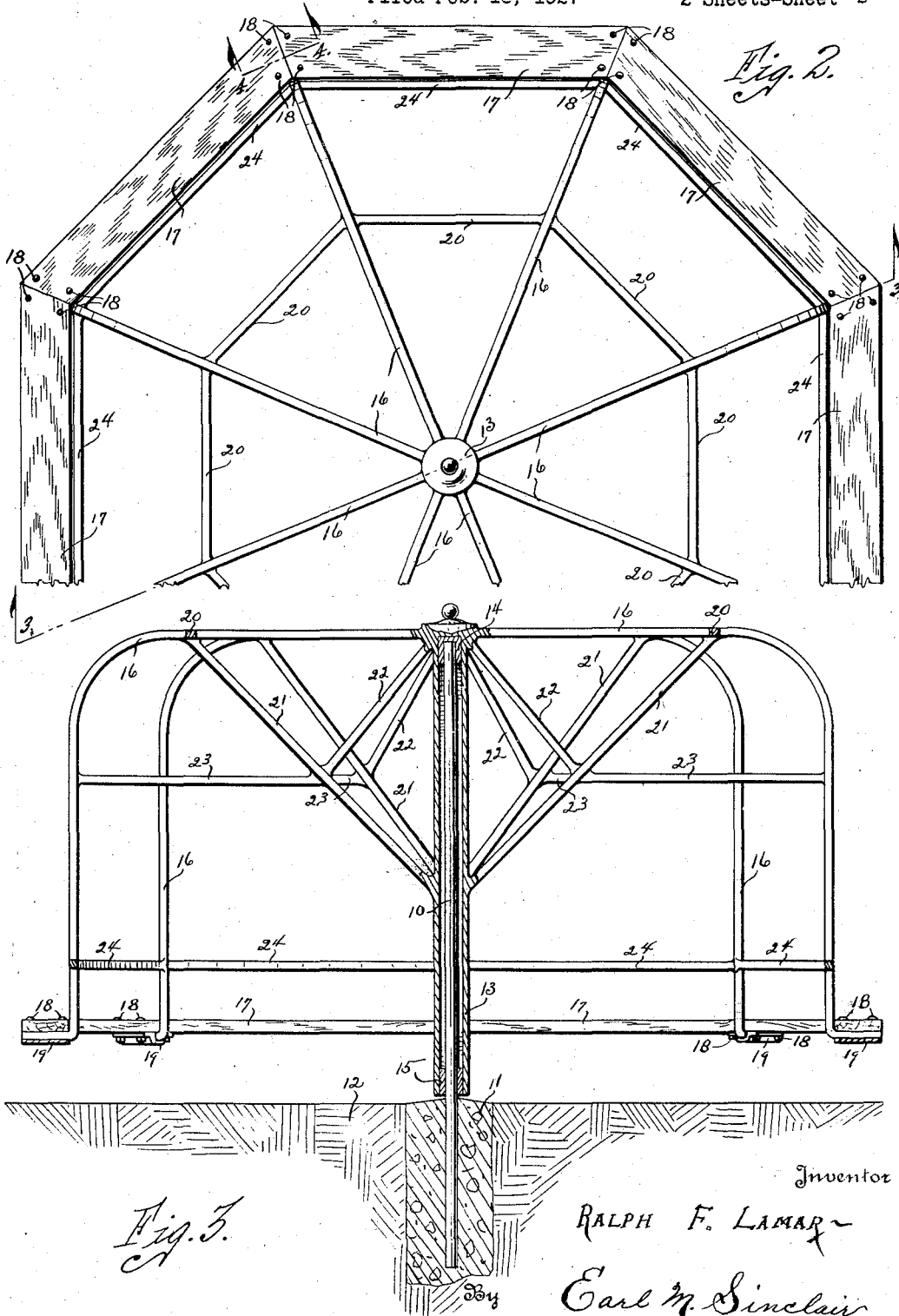
1,667,163

R. F. LAMAR

MERRY-GO-ROUND

Filed Feb. 18, 1927

2 Sheets-Sheet 2



UNITED STATES PATENT OFFICE.

RALPH FRANKLIN LAMAR, OF GARDEN CITY, KANSAS.

MERRY-GO-ROUND.

Application filed February 18, 1927. Serial No. 169,222.

The principal object of this invention is to provide a self-propelled merry-go-round for school play-grounds, parks and the like.

A still further object is to provide a self-propelled merry-go-round that is economical in manufacture and easily installed.

A still further object is to provide a self-propelled merry-go-round that is so constructed that its use will not endanger or harm the children playing with it.

More specifically, the object of this invention is to provide a vertical rotatably mounted hub having radial extending supporting arms, properly braced, for carrying a platform to accommodate the seating of children.

These and other objects will be apparent to those skilled in the art.

My invention consists in the construction, arrangement and combination of the various parts of the device, whereby the objects contemplated are attained as hereinafter more fully set forth, pointed out in my claims and illustrated in the accompanying drawings, in which:

Fig. 1 is a perspective view of my complete invention installed and ready for use.

Fig. 2 is a top plan sectional view of my merry-go-round and more fully illustrates the radial extending supporting arms and tie braces.

Fig. 3 is a side sectional view of my complete device taken on line 3—3 of Fig. 2 installed and ready for use and more fully illustrates the hub and axle construction.

Fig. 4 is a sectional view taken on line 4—4 of Fig. 2 and shows the means for securing the seat platform to the supporting arms.

Perhaps no other amusement device is more enjoyable to children than a merry-go-round. However their enjoyment of this device has been restricted due to the fact that it had to be operated by older people, was to a great degree dangerous, and necessitated finance. I have overcome all these objections by a safe self-propelled merry-go-round that is easily installed in any yard, gymnasium, school ground, or park.

The numeral 10 designates an axle designed to be held in a vertical position by having its lower end embedded in the concrete 11 which in turn is in the ground or flooring 12 as shown in Fig. 3. The numeral

13 designates a hub which is supported by and rotatably mounted on the axle 10 by the upper bearing member 14 embracing the upper portion of the axle 10 and the lower bearing member 15 between the lower portion of the hub 13 and the axle 10. Integrally formed on the top portion of the hub 13 are the radially extending supporting arms 16. These arms extend outward, downward, and then outward to support the merry-go-round platform a short distance from the ground. This platform consists of a series of boards 17, held together and secured on the supporting arms by the bolts 18 and clamp 19. By the above described construction it will readily be seen that the complete device may be easily rotated on the axle 10. In order that the complete device will be more rigid and durable, I have provided various braces. The numeral 20 designates tie braces between the radially extending supporting arms for holding the same the proper distance apart. At the point where these tie braces are integral with the supporting arms, I have a supporting brace 21 extending downwardly to the hub 13 as shown in Fig. 1 and Fig. 3. These supporting braces tend to throw the weight near the center of the hub and makes a truss effect that renders the complete device very rigid. The numeral 22 designates braces between the supporting braces 21 and the top portion of the hub 13. The numeral 23 designates horizontal braces between the supporting braces 21 and the downwardly extending portions of the supporting arms 16. Children that have an acrobatical tendency may utilize the braces 23 as horizontal bars. The hand rails 24 between the supporting arms may be used by the children riding on the platform 17 to maintain their stability thereon or by those rotating the merry-go-round as a hand hold.

The complete device rotates very easily and the children may first start it to rotating and then climb on the platform, either sitting or standing, and ride until the momentum of the merry-go-round is retarded to such an extent as to be further unenjoyable or until the merry-go-round has ceased to rotate entirely. Some children prefer to ride while one or more of the group rotates the merry-go-round. This rotation may be either by the operator standing still and

forcing the merry-go-round past him or by holding to the merry-go-round and running around with it.

The complete device may be made of any suitable material and it may be found in manufacturing that it is advisable to have the various arms and braces held together by bolts or the like instead of having them integrally formed with each other, and the braces may be variously arranged.

The same device may be made in miniature form as a small toy.

Once the device is installed it does not need further attention as there is no part that can get out of order.

It will be readily appreciated by all skilled in the art that I have provided a durable self-propelled merry-go-round for the enjoyment of children and one that is completely safe for their own operation without the supervision of an elder.

Some changes may be made in the construction and arrangement of my improved merry-go-round without departing from the real spirit and purpose of my invention and it is my intention to cover by my claims any modified forms of structure or use of mechanical equivalents which may be reasonably included within their scope.

I claim:

1. In a device of the class described, an axle designed to be held in a vertical position by having one of its ends buried in suitable material, a single hub member rotatably mounted on and embracing the major portion of the length of said axle, radially extending arms from the upper portion of said hub member first outwardly and then downwardly, a platform secured to the free ends of said arms, and braces leading from said supporting arms to a point on the center portion of said hub member that is of a height greater than that of the said platform.

2. In a device of the class described, an axle designed to be held in a vertical position by having one of its ends buried in suitable material, a single hub member rotatably mounted on and embracing the major portion of the length of said axle, radially extending supporting arms extending from the upper portion of said hub member first outwardly and then downwardly, a platform secured to the free ends of said supporting arms, a brace extending from the outwardly extending portion of each supporting arm to a point on the hub member that is of a height greater than that of the said platform, and a brace member leading from a point on the downwardly extending portion of each sup-

porting arm that is of a height greater than that of the said platform to one of the first mentioned braces.

3. In a device of the class described, an axle designed to be held in a vertical position, a hub rotatably mounted on said axle, radially extending supporting arms extending from the upper portion of said hub member first outwardly and then downwardly, a platform secured to the free ends of said supporting arms, tie braces between the radially extending supporting arms, a supporting brace leading from each supporting arm to the central portion of the hub member, and a brace leading from the central portion of each supporting brace to the upper portion of said hub member; all of said braces being at a height greater than that of the said platform.

4. In a device of the class described, a vertical axle member, a hub member rotatably mounted on said axle member, said hub member having a top bearing on said axle member and another bearing thereon spaced below said top bearing, an annular platform surrounding said axle member, supporting arms fixed to said hub member and having portions extending outwardly therefrom in substantially horizontal planes and also having integral portions extending downwardly and engaging said platform in supporting relation, and brace members further connecting said supporting arms to said hub member and located a considerable distance above said platform whereby the space between said platform and said axle member is left entirely clear for those using the device.

5. In a device of the class described, a vertical axle member, a hub member rotatably mounted on said axle member, said hub member having a top bearing on said axle member and another bearing thereon spaced below said top bearing, an annular platform surrounding said axle member, supporting arms fixed to said hub member and having portions extending outwardly therefrom in substantially horizontal planes and also having integral portions extending downwardly and engaging said platform in supporting relation, brace members connecting the outwardly extending portions of said arms to a point on the hub member spaced materially above the horizontal plane of said platform, and other brace members connecting the downwardly extending portions of said arms to intermediate portions of the first mentioned braces and located a considerable distance above said platform.

RALPH FRANKLIN LAMAR.